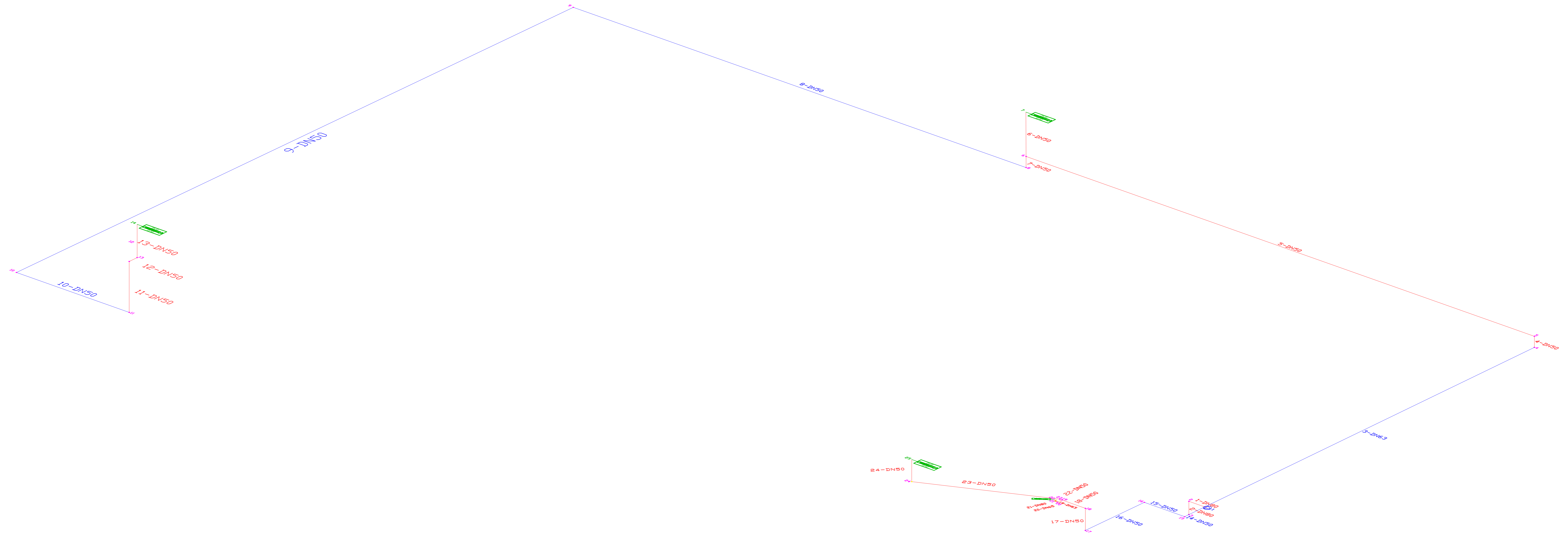


PLANIMETRIA RETE ANTINCENDIO
CCR PALMA DI MONTECHIARO (AG)



Sigla Identificativa	Descrizione	C (Nuovo)	C (Usato)
AM0	ACCIAIO non legato UNI EN 10255 Serie Media	120	84
PD1	POLIETILENE PE 100 PN 16 SDR 11 UNI 12201-2	150	105

Numero tratto rete	Nodi	Lunghezza [m]	Tipo Materiale Tubi	Dislivello [m]
1	2-1	1.00	AM0	0.00
2	3-2	0.60	AM0	0.60
3	4-3	21.86	PD1	0.00
4	4-5	0.50	AM0	0.50
5	6-5	27.49	AM0	0.00
6	6-7	2.00	AM0	2.00
7	6-8	0.50	AM0	0.50
8	8-9	24.48	PD1	0.00
9	9-10	34.90	PD1	0.00
10	11-10	6.10	PD1	0.00
11	11-12	2.30	AM0	2.30
12	13-12	0.50	AM0	0.00
13	13-14	1.50	AM0	1.50
14	3-15	0.27	PD1	0.00
15	15-16	2.18	PD1	0.00
16	16-17	3.69	PD1	0.00
17	17-18	1.00	AM0	1.00
18	18-19	1.27	AM0	0.00
19	20-19	0.30	AM0	0.00
20	21-20	0.16	AM0	0.00
21	22-21	0.16	AM0	0.00
22	19-23	0.12	AM0	0.00
23	23-24	6.33	AM0	0.00
24	24-25	1.00	AM0	1.00

#	Nodi	Mat.	Stato	Lung [m]	L Eq. [m]	DN/DE [mm - inch]	Diam. Interno [mm]	Press NI [bar]	Press NF [bar]	Dislivello [m]
1	2-1	AM0	Nuovo	1.00	0.00	80 mm [3"]	80.90	3.48	3.48	0.00
2	3-2	AM0	Nuovo	0.60	1.80	80 mm [3"]	80.90	3.48	3.53	0.60
3	4-3	PD1	Nuovo	21.86	5.44	63 mm [2 1/2"]	50.00	3.53	3.30	0.00
4	4-5	AM0	Nuovo	0.50	1.50	50 mm [2"]	53.10	3.30	3.23	0.50
5	6-5	AM0	Nuovo	27.49	1.50	50 mm [2"]	53.10	3.23	2.94	0.00
6	6-7	AM0	Nuovo	2.00	3.00	50 mm [2"]	53.10	2.94	2.59	2.00
7	6-8	AM0	Nuovo	0.50	3.00	50 mm [2"]	53.10	2.94	2.98	0.50
8	8-9	PD1	Nuovo	24.48	2.27	50 mm [2"]	39.60	2.98	2.80	0.00
9	9-10	PD1	Nuovo	34.90	2.27	50 mm [2"]	39.60	2.80	2.56	0.00
10	11-10	PD1	Nuovo	6.10	2.27	50 mm [2"]	39.60	2.56	2.50	0.00
11	11-12	AM0	Nuovo	2.30	1.50	50 mm [2"]	53.10	2.50	2.27	2.30
12	13-12	AM0	Nuovo	0.50	1.50	50 mm [2"]	53.10	2.27	2.26	0.00
13	13-14	AM0	Nuovo	1.50	1.50	50 mm [2"]	53.10	2.26	2.00	1.50
14	3-15	PD1	Nuovo	0.27	4.53	50 mm [2"]	39.60	3.53	3.49	0.00
15	15-16	PD1	Nuovo	2.18	2.27	50 mm [2"]	39.60	3.49	3.44	0.00
16	16-17	PD1	Nuovo	3.69	2.27	50 mm [2"]	39.60	3.44	3.39	0.00
17	17-18	AM0	Nuovo	1.00	1.50	50 mm [2"]	53.10	3.39	3.28	1.00
18	18-19	AM0	Nuovo	1.27	1.50	50 mm [2"]	53.10	3.28	3.27	0.00
19	20-19	AM0	Nuovo	0.30	3.60	65 mm [2 1/2"]	68.90	3.27	0.00	0.00
20	21-20	AM0	Nuovo	0.16	6.00	65 mm [2 1/2"]	68.90	0.00	0.00	0.00
21	22-21	AM0	Nuovo	0.16	0.00	80 mm [3"]	80.90	0.00	0.00	0.00
22	19-23	AM0	Nuovo	0.12	0.00	50 mm [2"]	53.10	3.27	3.27	0.00
23	23-24	AM0	Nuovo	6.33	0.60	50 mm [2"]	53.10	3.27	3.25	0.00
24	24-25	AM0	Nuovo	1.00	1.50	50 mm [2"]	53.10	3.25	2.98	1.00